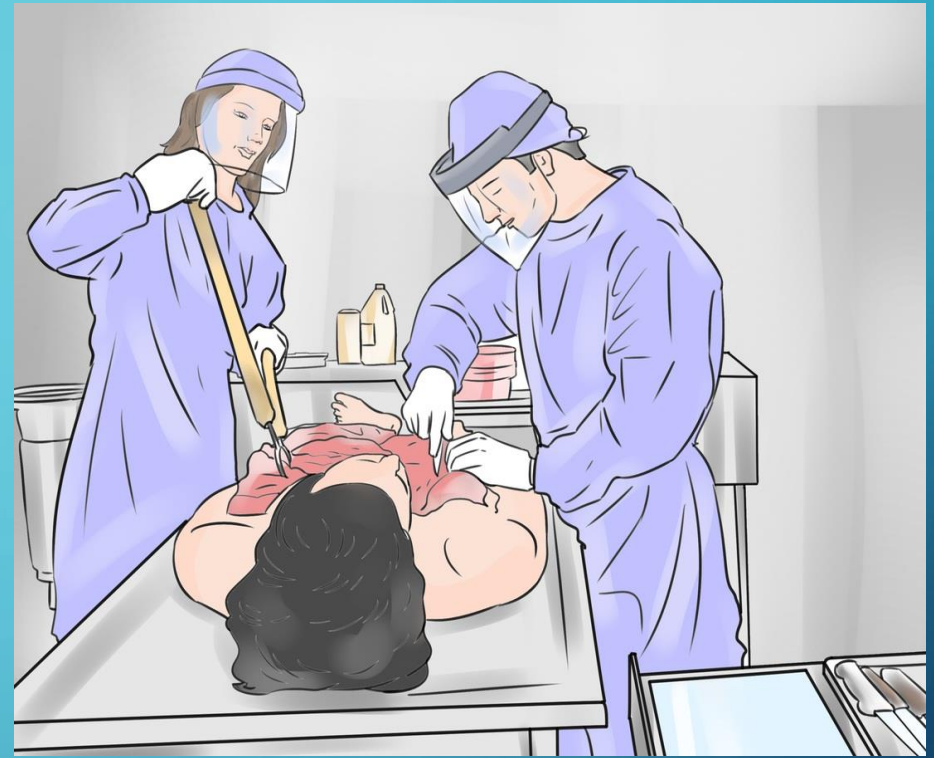


# OTHER FORENSIC SCIENCE SERVICES PART 1



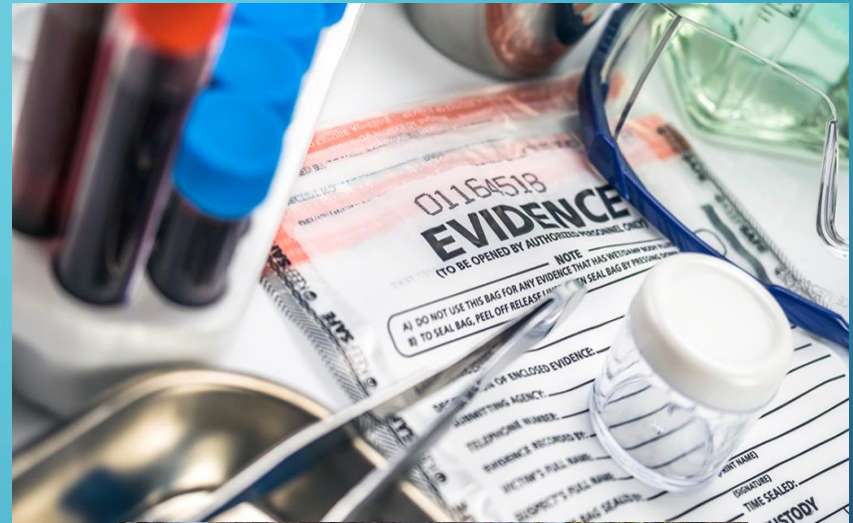
FORENSIC SCIENCE

SCHOOL YEAR 2023-2024

[JWARDISIANI@PTHS209.ORG](mailto:JWARDISIANI@PTHS209.ORG)

# FORENSIC PATHOLOGY

- This field deals with the investigation of sudden, unnatural, unexplained, or violent death.
- The forensic pathologist in the role of either the coroner or medical examiner has the responsibility to answer the question...
  - Who was the victim?
  - What injuries are present?
  - When did the injuries occur?
  - How or why were the injuries produced?



# THE PRIMARY ROLE OF THE MEDICAL EXAMINER



- Determine the cause of death.
- If a cause cannot be found through observation, an autopsy is normally performed to establish the cause of death.
- The manner in which death occurred is classified into FIVE categories.
- Natural
- Homicide
- Suicide
- Accident
- Undetermined

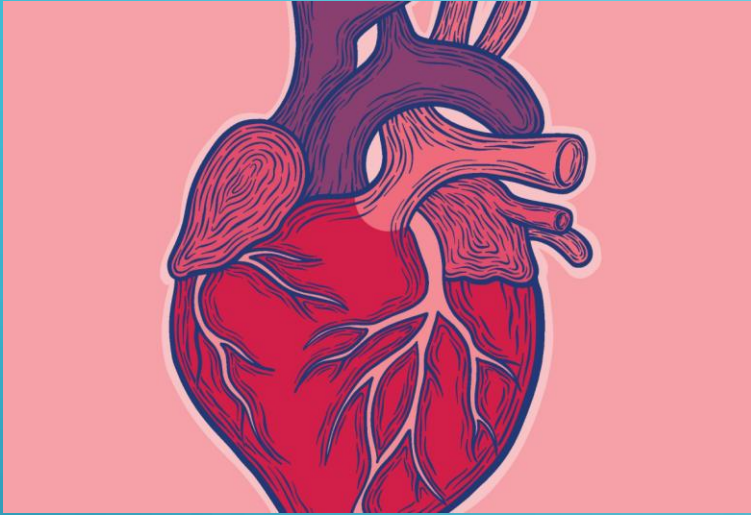


# AFTER THE HUMAN BODY EXPIRES

- The human body goes through several stages of decomposition.
- Time of death can usually be determined by degree of decomposition.
- Immediately following death, the muscles relax and become rigid without the shortening of muscle. This condition is known as RIGOR MORTIS., which manifests itself within 24 hours and disappears in 36 hours.



# LIVOR MORTIS

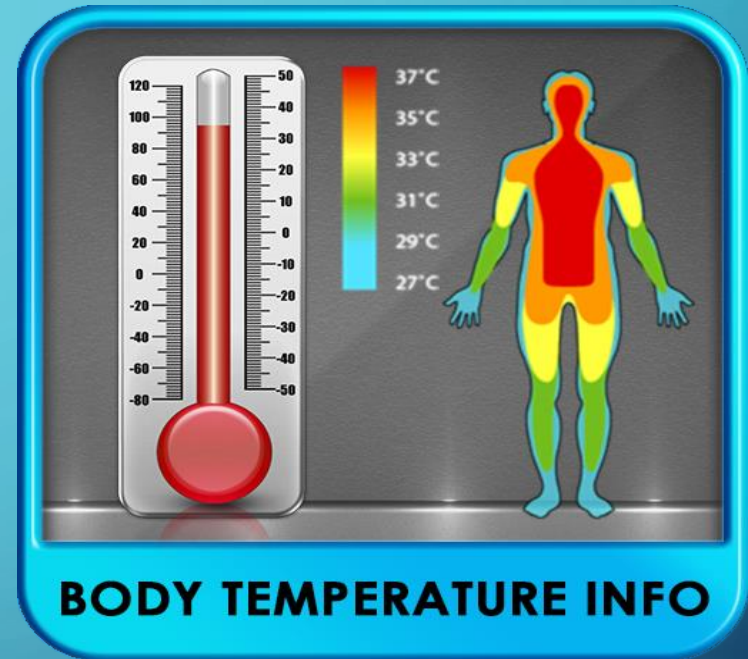


- When the human heart stops pumping, blood begins to pool in the lowest position of the body: (Portions of the body closest to the ground).
- The skin will appear dark blue over these areas.
- The onset of this condition occurs immediately at death, and continues for up to twelve hours.
- This information is useful when determining the position of death, or whether the body has been moved.



# ALGOR MORTIS

- Algor Mortis is the process in which body temperature continually cools after death until it reaches the ambient room temperature.
- Factors that affect heat loss are...
- Location
- Size of the body
- Victims Clothing
- Weather Conditions.
- As a general rule, beginning at the hour of death, the body will lose heat at a rate of 1 to 1 ½ degrees Fahrenheit per hour until the body reaches environmental temperature.



# THANK YOU FOR YOUR ATTENTION

- I hope you took notes...you will see this on your up-coming TEST.
- Please refer to your Plan of The Week for your next assignment.

